

NAV JEEWAN MODEL SCHOOL

Vishnu Garden



SUBJECT :- ENGLISH

- ❖ Revise Unit Test – 1 syllabus thoroughly.
- ❖ Do one page of writing daily in your holiday's homework notebook (10 pages).
- ❖ Do Comprehension passage – 2, 3 given on page no. 111, 112 in Grammar book.
- ❖ Use five words from MY DICTIONARY (Petals of English) of Chapter – 1, 2 to make sentences of your own. Also write their synonyms and antonyms.
 - Identify the parts of speech for the bolded words in each sentence:
 1. Her loyalty and honesty made her a great friend.
 2. Inside the classroom was a happy teacher.
 3. The loyal fans cheered their team on during the game.
 4. We had no homework tonight because of the class meeting.
 5. Mrs. Sharma believes money cannot buy happiness.
- On the basis of Lesson – 2 “ Oliver Twist ” :

Imagine you are Oliver. Write a letter to your friend, living in another country, telling him/her about your experiences while staying with Ms. Maylie and Rose.
- Write a paragraph on – “How I Spent My Summer Vacation” in your H.H.W. notebook in 150 words.
- Gratitude means being thankful and appreciating kindness. It makes us a better person. Write a short poem about the things you are grateful for.
- Also, mention 10 Moral and Core Values a students must have.

English Activities Zone

**1. Make a face mask Public Figures like:-
Police, Politician, Actor, Athletics,
Businessman etc.**

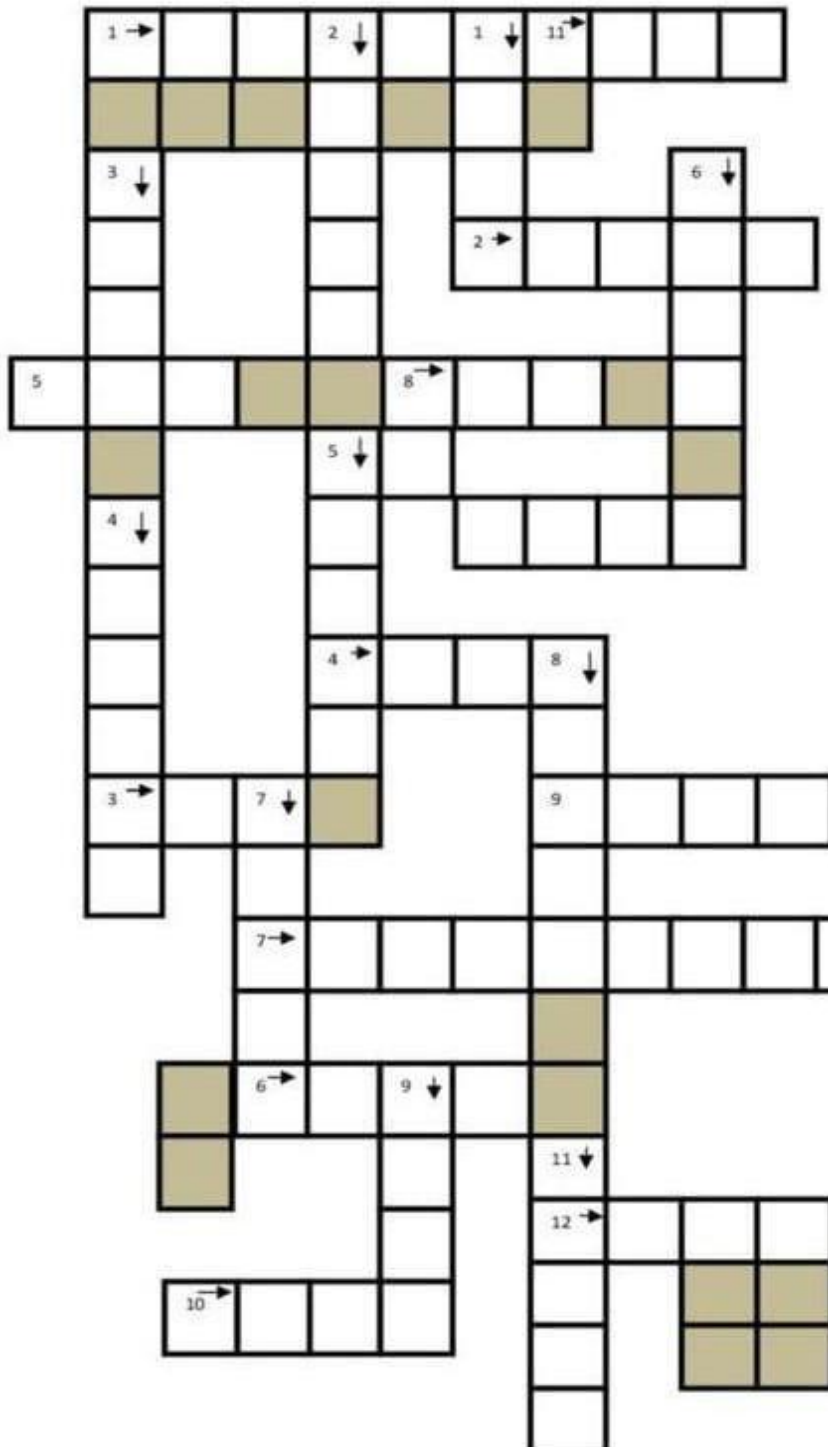
**and describe their characteristics in front
of the class.**

**2. Bring a book from the school library and
read a book in summer vacations Also write
a summary of the story on A4 size sheet.**

NAV JEEWAN MODEL SCHOOL

Vishnu Garden

CROSSWORD: IRREGULAR VERBS



Across

- 1.- Past simple of TEACH
- 2.- Past participle of KNOW
- 3.-Past simple of DO
- 4.-Past participle of LOSE
- 5.-Infinitive of GOT
- 6.-Past participle of KEEP
- 7.-Past simple of UNDERSTAND
- 8.-Past participle of WIN
- 9.-Past simple of RISE
- 10.-Past participle of READ
- 11.-Past participle of LIE
- 12.- Past participle of HIDE
- 13.- Past simple of GROW

Down

- 1.- Past simple of TAKE
- 2.- Past participle of GIVE
- 3.-Past simple of WEAR
- 4.-Past participle of HEAR
- 5.-Past simple of STEAL
- 6.-Past participle of EAT
- 7.-Past participle of DRINK
- 8.-Past simple of TEAR
- 9.-Past participle of PAY
- 10.- Past simple of DIG
- 11.-Past participle of SHINE

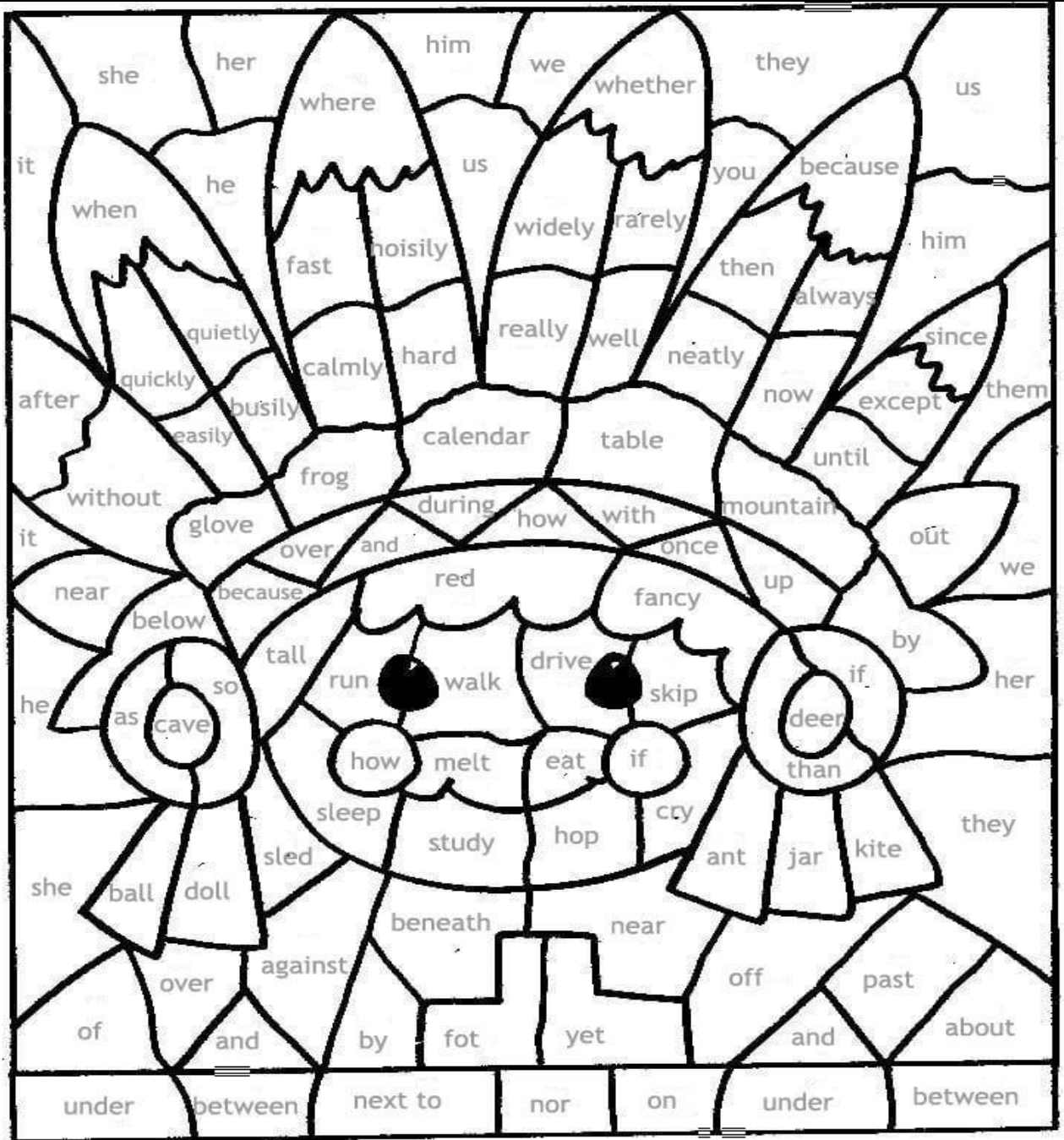


NAV JEEWAN MODEL SCHOOL

Vishnu Garden

Parts of Speech

Colour the picture using the key below



brown-verb

yellow-noun

orange-preposition

red-conjunction

white - adverb

black-adjective

blue-pronoun

NAV JEEWAN MODEL SCHOOL

Vishnu Garden

Identify the nouns and state their kind.

1) The crowd was turning restless.

2) Always speak the truth.

3) Our class consists of thirty pupils.

4) The Nile overflows its banks every year.

5) We waited anxiously for the jury to come to a verdict.

6) The sheep clustered in a tight flock to ward off the cold weather.

7) A pride of lions was stalking the injured zebra.

8) He has a house across the river.

9) Michael Clarke is his mentor.

10) Ravi called out to his dog, Wilson.

NAV JEEWAN MODEL SCHOOL

Vishnu Garden

Past Simple (Irregular Verbs)

Put the verbs in brackets into past simple.

Last summer, Ann (have) a lovely vacation with her family! On Friday morning, she (play) basketball with her best friend, Kate, and (ride) a bike at the playground. In the evening, Ann (help) her mother cook a delicious meal. They also (invite) Kate and together (have) a great dinner outside in their garden. After the meal, Kate and Ann (clean) the floor and (wash) the dishes. At 8 p.m., the whole family (gather) together to play poker. It (to be) fun and memorable. On Saturday morning, Ann (go) to the zoo with her parents. She really (love) the lions and monkeys there. She also (get) the chance to see the hippos being fed. It (to be) an interesting experience. That evening, Ann (walk) her dog in the park before going to bed. On Sunday, she (invite) Kate to go to the beach. They (swim) at the beach and (build) a sand castle. They truly (have) a lovely time together! At the end of the day, they (come) home and (do) their homework. They (go) to bed early because they (have) to go to school on Monday.



SUBJECT :- HINDI

- 1) 20 पेज सुलेख करे।
- 2) कक्षा में कराए हिंदी पाठमाला और व्याकरण के सभी कार्य याद करे।
- 3) विश्व के सात अजूबे में से किसी दो के बारे में लिखे और उनके चित्र चिपकाए।
- 4) वर्णमाला का चार्ट बनाए।
- 5) भारत रत्न से नवाजे किन्हीं पांच लोगो के बारे में लिखे और उनके चित्र चिपकाए।
- 6) देशप्रेम पर आधारित एक कविता A 4 शीट पर लिखे और उसे लय सहित याद करे।
- 7) भारत के राष्ट्रीय प्रतीक को A 4 शीट पर चिपकाए।
- 8) कल्पना करो की तुम अपने माता पिता के साथ ताजमहल देखने गए हो, अपने दिल्ली वाले मित्र को ताजमहल की खूबसूरती के बारे में बताते हुए पत्र लिखे।



creativeworksheetshub.com

Hindi Grammar Worksheet

दिए गए वाक्यों से संज्ञा शब्द छांटकर लिखिए

1. राम और श्याम बगीचे में गए।

उत्तर:

2. नदी का पानी साफ था।

उत्तर:

3. दिल्ली भारत की राजधानी है।

उत्तर:

4. किताबें पढ़ने से ज्ञान बढ़ता है।

उत्तर:

5. अनिल ने अपने घर को साफ किया।

उत्तर:

6. पहाड़ों पर बर्फ जमी हुई थी।

उत्तर:

7. पक्षी आसमान में उड़ रहे हैं।

उत्तर:

8. गाय खेत में घास खा रही है।

उत्तर:

9. सोहन ने दुकान से चॉकलेट खरीदी।

उत्तर:

10. राजा अपने महल में रहता था।

उत्तर:

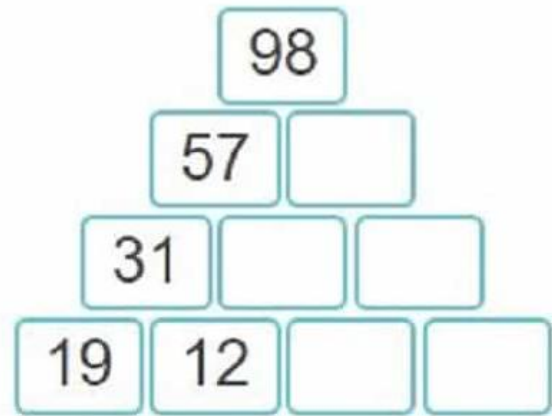
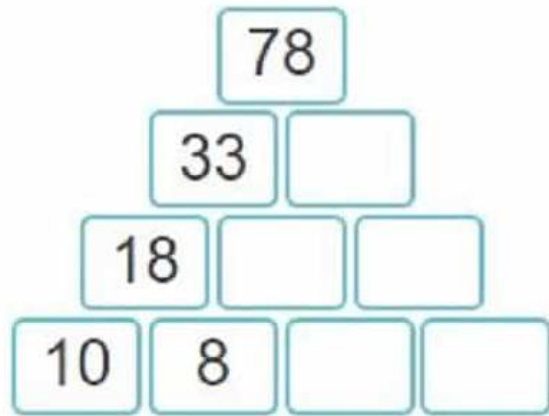
MATHEMATICS

1. Learn tables from 2 to 20. And write it 5 times.

2. Practice Sums/question of (Addition, Subtraction, Multiplication / Division). (10 questions every day)

3. Wall puzzle

Arrange it from digit 1 to 8 so that consecutive digits does not cross each other in any manner either vertically horizontally, or slanting.



4. Create your own word problems on all four operations (+, x, -, ÷) (based on real life application which you will do in your vacation (2 on each operation)

5. Family handprints activity

a) Draw a tree, print hand of your family members on A4 or A3 size Sheet and label it

b) Measure the length and width of handprint with measuring scale then note it on backside of sheet.

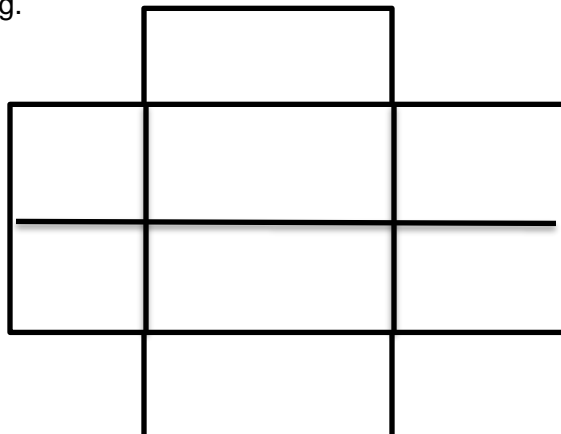
c) Arrange the measure in Ascending and descending Order, note it on backside of the sheet.

d) Frame it with a beautiful quote as shown In picture.



6. solve this:

Arrange it from digit 1 to 8 so that consecutive digit does not cross each other in any manner. Neither vertically, horizontally nor slanting.



NAV JEEWAN MODEL SCHOOL

Vishnu Garden

Worksheet

Q1. Find the sum.

- a. $5,783 + 76,890$
- b. $2,84,564 + 3,63,121$
- c. $34,256 + 16,341$
- d. $20,45,643 + 47,00,123$
- e. $6,95,55,002 + 15,97,134$

Q2. Prisha goes to Jewellery shop and buys some items.

<u>Product</u>	<u>Price (in ₹)</u>
Ring	4,32,568
Necklace	3,89,24,164
Bangles	25,45,849
Earrings	2,14,125
Anklet	89,500



a) What is the total cost of necklace and bangles?

b) What is the difference between the cost of ring and earrings?

c) How much more is necklace costs than anklet and bangles?

d) Find the total amount Prisha needs to pay?

NAV JEEWAN MODEL SCHOOL

Vishnu Garden

Q3. Mr. Dutta purchased a car at the showroom price of ₹14,35,690. He spent ₹ 35,975 on accessories and paid ₹ 46,760 on registration, insurance and road tax. What was the total amount he had pay for the car?



Q4. The population of a town is 28,76,543. Out of these 15,42,678 are males. How many females are there in the town?



Q5. There are 21,827 children in Navrachna School. Each child pays ₹ 489 per month as the tuition fee. How much money is collected by the school per month?



Roman Numbers					Sum in Roman Numeral	Sum in Hindu Arabic
IV	IX	VIII	XLVII	XLVIII		
XXXVII I	XIX	XX	XXXIV	XXXI V		
XXXIX	XXXVI I	XXV I	XXVII	XXII		

NAV JEEWAN MODEL SCHOOL

Vishnu Garden

Mathematics Activities Zone

1. Math's Around Me (Photo Project)

Take photos of 5 things around your home or neighborhood that show math in real life (shapes, numbers, patterns, symmetry).

Make a mini poster and label the math's concepts you found.

2. Mathematics Activity Zone

Make a 3D wall clock with Roman numbers and place it in your classroom.

NAV JEEWAN MODEL SCHOOL

Vishnu Garden

Task 1

The Greenhouse Effect and our Planet

The greenhouse effect happens when certain gasses which are known as greenhouse gasses accumulate in Earth's atmosphere. Greenhouse gasses include carbon dioxide , methane , nitrous oxide , ozone and fluorinated gasses.

- ★ What is the greenhouse effect and how does it contribute to global warming?
- ★ What are the main causes of the greenhouse effect and how severe is the problem?
- ★ What are the effects of global warming on the environment and human society?
- ★ How can individuals and communities contribute to reducing greenhouse gas emissions and addressing climate change?
- ★ What are some of the innovative technologies that are being developed to reduce greenhouse gas emissions?
- ★ What international protocols and policies have been developed to address climate change?

Task 2

The World's Plastic Pollution Crisis

Much of the planet is swimming in discarded plastic, which is harming animals and possibly human health. Can it be cleaned up?

Plastic pollution has become one of the most pressing environmental issues, as rapidly increasing production of disposable plastic products overwhelms the world's ability to deal with them.

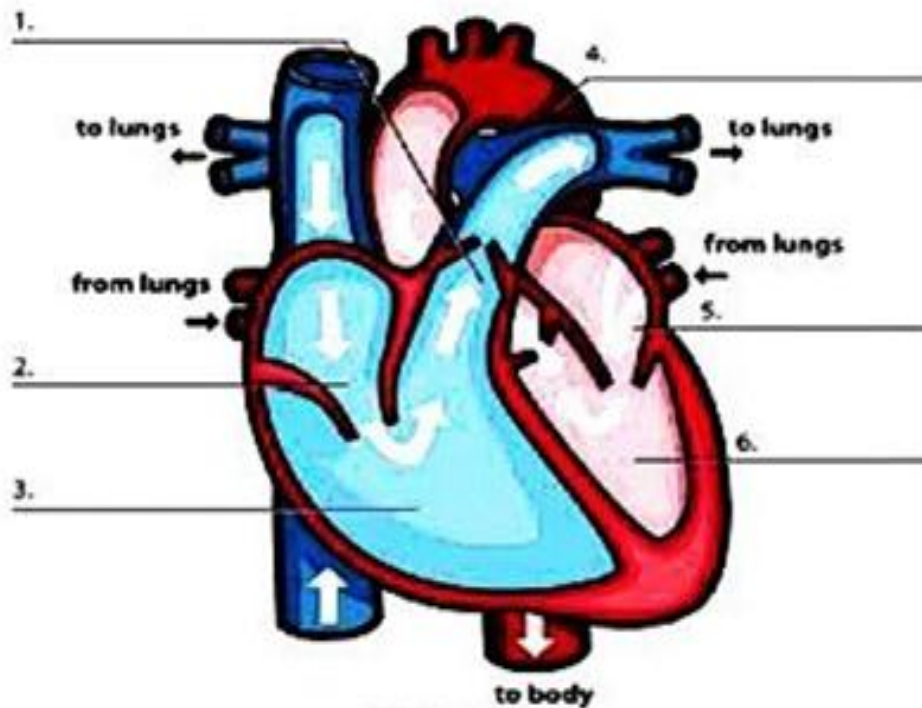
- ★ What is the current state of the world's plastic pollution crisis?
- ★ How do plastics move around the world and what are the main sources of plastic waste?
- ★ What are microplastics and how are they contributing to the plastic pollution crisis?
- ★ What are the most significant harms caused by plastic pollution to wildlife and ecosystems?
- ★ Can plastic pollution be cleaned up and what methods are being used to remove plastic waste from oceans and other water bodies?
- ★ What are the potential long-term consequences of the plastic pollution crisis on the environment and human society?
- ★ Mention a few ways by which we can reduce the plastic waste and create awareness amongst the people.

NAV JEEWAN MODEL SCHOOL

Vishnu Garden

OUR HEART AND THE CIRCULATORY SYSTEM

WRITE THE PARTS OF THE HEART



WORD BANK

left ventricle
right ventricle

right atrium
left atrium

pulmonary artery
aorta

FIND THESE WORDS RELATED TO THE CIRCULATORY SYSTEM

A	L	E	T	I	T	F	L	O	W	Y	M	S	Y	E
N	T	M	C	J	F	Z	D	A	F	I	L	N	T	W
X	A	R	W	I	O	V	A	S	P	H	L	A	R	N
R	S	N	I	E	V	N	G	J	L	N	H	F	U	B
M	C	Q	Y	U	U	W	W	H	C	Y	P	T	L	C
V	W	W	V	O	M	X	H	W	C	D	R	O	J	N
W	T	A	E	T	S	A	W	E	A	I	O	B	A	Y
J	B	N	N	E	G	Y	X	O	E	D	F	R	Z	G
A	R	T	T	P	K	M	S	N	W	F	T	N	I	W
H	E	A	R	T	S	R	T	L	S	E	V	L	A	V
F	B	U	I	S	W	S	B	G	R	B	H	L	Q	R
C	I	R	C	U	L	A	T	I	O	N	E	R	M	C
V	X	Z	L	G	V	X	E	G	Y	Q	D	A	Y	W
S	L	P	E	P	A	S	H	V	S	G	C	O	T	O
B	V	U	S	S	E	A	D	H	X	T	H	Y	R	E

NAV JEEWAN MODEL SCHOOL

Vishnu Garden

Circulatory System

1. _____ is a fluid that brings body
_____ the food and _____ they
need to live and _____.
2. _____ is the straw-colored fluid that contains
_____, _____,
_____.
3. The 4 main ingredients of blood are _____,
_____, _____,
_____.
4. _____ blood cells attack harmful bacteria.
5. _____ blood cells carry oxygen and waste throughout the
body.
6. _____ are tiny disks that seals tears and cuts.
7. _____ stops an injured person from bleeding to death.
8. _____ and _____ are the largest
blood vessels.
9. _____ carry the high-pressure blood away from
the heart.
10. _____ carry low-pressure blood to the heart.
11. The tiniest blood vessels are called
_____.
12. An adult man has about one _____ of blood.
13. The heart is about the size of _____.
14. It sits in the _____ of your _____.
15. Hearts have 2 chambers called the _____ and
the _____.
16. _____ control the blood flow in and out.
17. The heart is a _____.
18. It's action supplies _____ and nutrients to
body _____ and removes their _____
products.

NAV JEEWAN MODEL SCHOOL

Vishnu Garden

I - NAME THE FOLLOWING :-

1. A point where two separate bones meet. _____
2. The joint between two vertebrae. _____
3. A frame work of bones. _____
4. The other name for backbone. _____
5. The joint that allows movement in all directions. _____
6. The strong fibres by which the muscles are attached to the bones. _____
7. The muscles which are under our control. _____
8. The other name of thigh bone. _____
9. Tough tissues by which the bones are held together. _____
10. Two pairs of lower ribs which are not attached to the breast bone. _____

II - FILL IN THE BLANKS:

1. Muscles are made up of tough _____ tissues.
2. The _____ covers and protects the brain.
3. Muscles are attached to the bones by strong fibres called. _____
4. _____ muscles are not under our control.
5. The _____ protects the heart and the lungs.
6. In the upper arm there is a long bone called _____
7. A break in the bone is called a _____
8. The _____ protects the spinal cord.
9. The delicate spinal cord passes through the _____
10. The _____ and _____ of the muscles move bones.

III - WRITE TRUE OR FALSE

1. Muscles are attached to the bones by strong fibres called tendons. ()
2. We have one pair of limbs. ()
3. There are four types of muscles in our body. ()
4. A break in the bone is called fracture ()

NAV JEEWAN MODEL SCHOOL

Vishnu Garden

Human Skeleton

Label the bones by choosing the correct ones from the box below



Skull

Tibia

Backbone

Vertebra

Pelvis

Rib

Femur

Humerus



NAV JEEWAN MODEL SCHOOL

Vishnu Garden

Name: _____



Skeletal System



Fill in the Blanks

Word Bank					
Grow	Brain	Calcium	Spinal	Fuse	206
	Skull	Ribs	Equipment	Move	

An average adult has _____ bones. Bones _____ as we get older. A baby is born with 300 bones, but they _____ together as they get older. Your skeletal system is what supports your muscles, allowing you to _____. Your spine is made up of 33 bones that protect your _____ cord and allow you to twist, bend, and stay upright. Your _____ protect your vital organs, like your heart. Your _____ protects the most important organ, your brain! You can protect your bones by wearing proper _____ when playing sports. You can strengthen your bones by eating dairy, which contains _____.

Science Activities Zone

1. Grow your favourite plant at your home, Water the plant and label the name on it also bring it to school after summer vacations.

2. Prepare a 3D and colourful poster on seed germination also label it.

3. Draw the food Pyramid on Chart or A4 size sheet and label it.

SUBJECT :- SOCIAL STUDIES.

Q.1 Revise U.t -1 syllabus.

Q.2 Make a list :-

- Make a list of the ways in which the resources are being wasted in your neighbourhood.
- Spread awareness in the neighbourhood suggesting people to avoid such wastage.

Q.3 Do complete any 2 tasks.

Task - 1

We celebrate Independence Day on 15 August . Many people had sacrificed their lives to make India free from the British. They loved their country and because of them we are enjoying the basic rights. We should also love and respect our country. It is our duty to serve the nation and to protect it, so make a chart of the rights and duties of students in a school.

And also discuss what fundamental duties you can carry out as a child towards the country.

Task - 2

Draw a map of the world and mark the Equator, Prime Meridian, and other important lines of latitude and longitude.

Task - 3

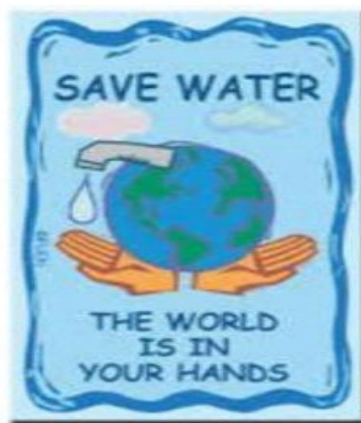
BE A WATER SAVIOUR

Water is a natural resource that we derive from the Earth. Without it, we would not be able to live! Imagine a world with no water at all. You wouldn't be able to drink, bathe, wash clothes and so on. Without clean water, other creatures, such as plants, animals, birds and ocean life would also get sick and die. Saving water is the need of the hour. Do you know that as kids you can play a big role in water conservation campaign?

In order to create awareness for saving water, you

• **Make two book marks on "Save Water" theme by your own imagination.**

Some ideas for bookmarks are given below:



Social Studies Activities Zone

- 1. Make A meaningful conversation with anyone on Peace and write on A4 size sheet.**
- 2. List the Heroes of the Operation Sindoor, Past the picture and write their achievements on A4 Size sheet.**

NAV JEEWAN MODEL SCHOOL

Vishnu Garden

Early Humans

Fill in the blanks –

We use different means of _____ to move from one place to another.

Early humans made tools from _____ and _____ of animals.

Early humans looked like _____.

Early humans lived in _____ and in places sheltered by _____ rocks.

The caves protected them from _____ and _____.

Early humans hunted _____ for food.

The invention of _____ made hunting easier.

The invention of _____ made movement of goods easier.

The wheel was used for _____ and weaving.

The potter's wheel was used to make _____.

Early humans began to use fire to _____ and protect themselves from _____.

Copyright © theopenbook.in. All rights reserved

Constitution Day Writing Activity

- What is the Constitution and why was it written? _____

- Why is the Constitution important to us? _____

- You have just created your own country.
Write your new country's constitution. _____

NAV JEEWAN MODEL SCHOOL

Vishnu Garden

LATITUDE OR LONGITUDE?

Draw the boxes into the correct columns

	
LATITUDE	LONGITUDE

Lines that run north and south.

These lines are called parallels.

Lines extending around the Earth horizontally.

Measure distance east or west.

The Equator is at 0° degrees

The Prime Meridian, in Greenwich, is at 0°. Lines run east or west.

These lines are called meridians.

The lines running vertically around the Earth. Measure distance north or south.

INDIA AND ITS NEIGHBOURS

Q.1 Fill in the blanks:

-is the most populated country in the world.
- India is thelargest country in the world.
- India extends aboutkms from Jammu and Kashmir to Kanyakumari.
-is the capital of Mizoram.
- Patna is the capital of

Q.2 Give one word:

- A large mass of land.
- A piece of land surrounded by water on the three sides.
- It is also called a tableland.
- A piece of land surrounded by water on all sides.
- India is located in this part of Asia.

Q.3 Correct the false statement:

- The name India is derived from the river Ganga.
- The most important city in the state is called Plaza.
- Desert regions receive maximum rainfall.
- Mumbai is the capital of India.
- India is divided into smaller areas called sectors.

NAV JEEWAN MODEL SCHOOL

Vishnu Garden

G.K

1. Write 3 current affair daily from "english newspaper" or "Internet".
2. Write a short note "terrorism "effect of terrorism on India
3. Tell about yourself. Also write what you want to become and you do for this. (For this use pictures) the work should be done on A3 Size sheet. (Use colour)
4. Make a and Chart on "National Symbols" paste pictures on it. (label it).
5. Revise lesson – 1 to 17. And also learn it.

Craft

Project: - Make one best out of waste.

Dear students please collect the waste materials of your house and make something interesting with it. It can be useful item or it can be decorative item also. Materials which you can use i.e. empty boxes, waste old clothes, or any other things which you can get easily. Be very careful about your hygiene.



NAV JEEWAN MODEL SCHOOL

Vishnu Garden

Sanskrit

प्रश्न -1-पाठ 1 ,2 ,3 पढ़ो व किताब कार्य याद करो।

प्रश्न 2- पठ्, क्रीड् धातु के रूप लट् लकार (वर्तमान काल)में लिखो व याद करो।

प्रश्न -3-पेज न०(63) शरीर के अंगों के नाम A4 sheet पर लिखो व चित्र चिपकाओ।

French

1- Draw a pictures of France map, flag, France national symbol, Louvre museum French recipes names and write 2 lines on each

2-Write French Alphabet and learn

3- Write about France monuments, festival names currency names.

Computer

Create a Digital Gratitude Card

Tools: MS Paint / Canva / PowerPoint

Skills: Creativity, using shapes, text, colors.

Activity: Design a digital card for Army Soldiers.

SEND ON THIS MAIL:-

ailabnjms@gmail.com

NAV JEEWAN MODEL SCHOOL

Vishnu Garden

Punjabi



574.....

ନିର୍ଦ୍ଦେଶକ.....

ੳ	ਖ	ਗ	ਸ	ਪ
ਕ	ਖ	ਗ	ਘ	ਘ
ਚ	ਛ	ਜ	ਝ	ਞ
ਟ	ਠ	ਡ	ਢ	ਣ
ਤ	ਥ	ਦ	ਧ	ਨ
ਪ	ਫ	ਬ	ਭ	ਮ
ਯ	ਰ	ਲ	ਵ	ਸ਼
ਹ	ਖ	ਗ	ਙ	ੲ